

JACKSON COUNTY TRANSPORTATION PLAN



CLIENT
Jackson County, GA

LOCATION
Jefferson, GA

DURATION
12 months

ROLE
Stakeholder Engagement
Public Outreach

BUDGET
\$17,000

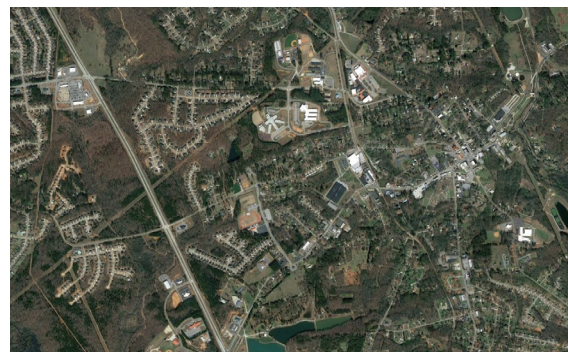
COMPLETED
July 2019



Jackson County has decided to reassess its transportation network since it has not updated its current transportation plan since 2008 and to prepare for recent and future expected growth. The Jackson County Transportation Plan will create a multi-modal plan for the next 25 years that focuses on improving the County's transportation network, making the community more livable and healthier while strengthening the economy for all members of the community built upon community's character and needs. The plan is funded by the Gainesville-Hall Metropolitan Planning Organization (GHMPO), Jackson County and several municipalities within the county.

Blue Cypress Consulting is responsible for Community Outreach and Engagement throughout the life of the project which consists of both online engagement and community events. The online engagement portion of this project is being hosted by PublicInput.com, an integrated public engagement platform, which acts as a multifunctional central outreach portal for all activities associated with the project and is being managed by Blue Cypress. The project's PublicInput hubpage performs multiple functions, including sending and receiving email notifications and comments, coordination and management of social media accounts, creation of an interested parties database, creation and distribution of a project survey and other general information about public outreach events. Blue Cypress will host four pop-up events throughout the county with a booth setup that includes project handouts, maps, and laptops for

survey taking. The feedback and data gathered from the project hub page and survey will be used to establish and prioritize goals and needs as they relate to transportation projects.



The City of Jefferson and New Developments

